



Warren Road, Reigate

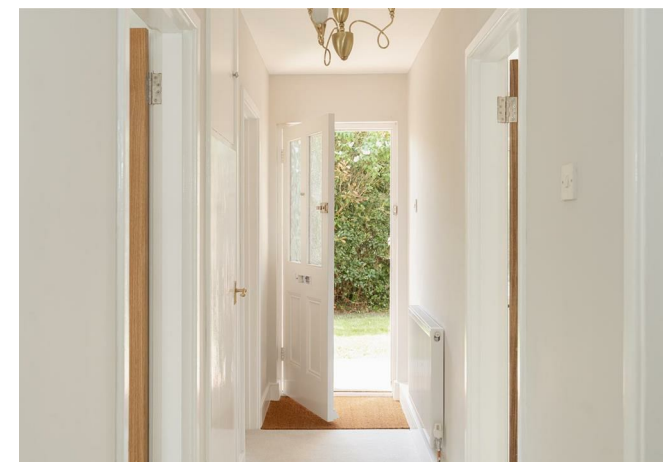
Guide Price £375,000





A chance to buy a spacious property, in a quiet residential street, within striking distance of Reigate town centre. With it's own private garden as well as a garage and parking space, it ticks all the boxes!





Located in the heart of Reigate, this gorgeous two-bedroom ground floor maisonette offers stylish, low-maintenance living just moments from the town centre's vibrant shops, restaurants, and excellent transport links.

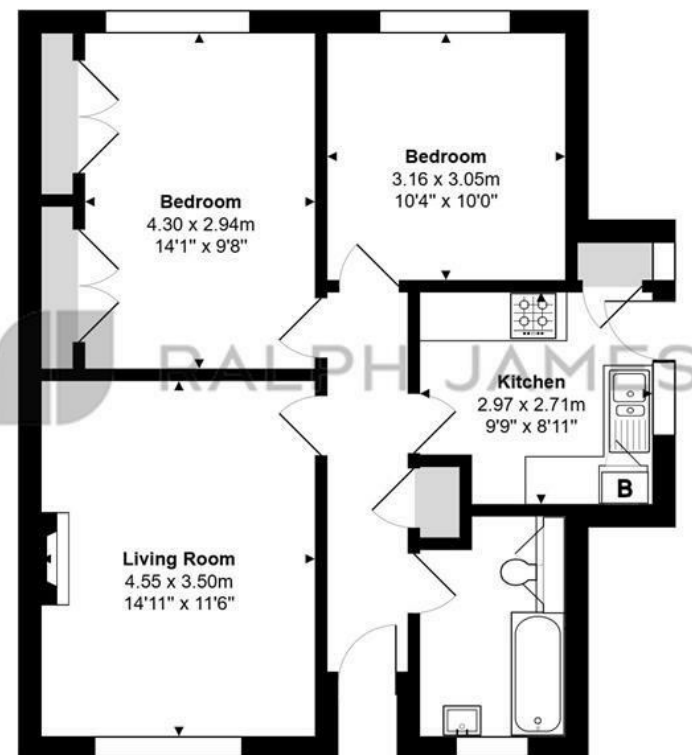
Light and airy throughout, the property has been tastefully updated to create a fresh and modern feel, with neutral décor. Comprising of a generously proportioned living space, a well-appointed kitchen and two comfortable bedrooms, this is an ideal home for professionals, downsizers or first-time buyers.

One of the standout features is the private south-facing garden, a rare and desirable find for a property of this type. With a combination of decking and lawn, it offers the perfect space to relax, entertain or enjoy the sunshine throughout the day. Further benefits include a garage en bloc, with parking in front, a further communal garden area, double glazing, gas heating, and ample storage throughout.

Set within a quiet residential area yet just a short stroll from Reigate Station along with a selection of shops and takeaways, this property effortlessly blends convenience with comfort.

Need to know

- Ground floor two bedroom maisonette
- Light and airy, with neutral decor and carpets throughout
- Modern, separate kitchen
- Large, bright living space, overlooking the enclosed private garden
- Two good size double bedrooms, the main bedroom has built in wardrobes
- Garage en bloc to the rear, with parking in front
- Gorgeous, South facing, private garden, as well as separate communal garden area
- Less than 0.2 miles to Reigate train station with a selection of local shops and takeaways
- Share of Freehold



Ground Floor

Warren Road, Reigate

Total Area: 63.1 m² ... 679 ft²

FOR ILLUSTRATIVE PURPOSES ONLY.



Whilst every attempt has been made to ensure the accuracy of the floor plan shown, all measurements, positioning, fixtures, features, fittings and any other data shown are an approximate interpretation for illustrative purposes only and are not to scale.

No responsibility is taken for any error, omission, miss-statement or use of data shown.

The above statement applies to both 'Still Moving London LTD' and the Company or individual displaying this floor plan.

Unauthorised reproduction prohibited.

© Still Moving London LTD (www.stillmoving.london)

Interested?

reigate@ralphjames.co.uk
01737 333677

ralphjames.co.uk

 RALPH JAMES